

# FOCUS 600

Promising easy set-up and assembling, Focus 600 is a state-of-the-art sliding garden gate engine. All fit-in and small in size, it takes up small space. Strong, solid and high-speed engine structure is capable of opening and closing gates up to 600 kg smoothly.



SQUEEZE  
DETECTION



ACCUMULATOR  
FEATURES



REMOTELY  
CONTROLLABLE



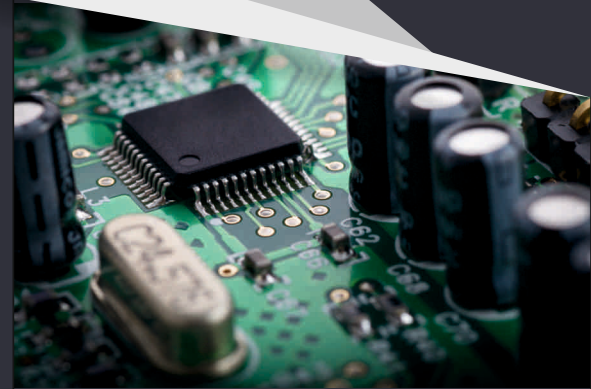
# SMART AND POWERFUL

## AREA OF USE

For its small dimensions, Focus 600 is fit for use anywhere. It has a proactive area of use for uninterrupted performance at apartment block, building site and villa entrance.

## CUSTOMISED DESIGN

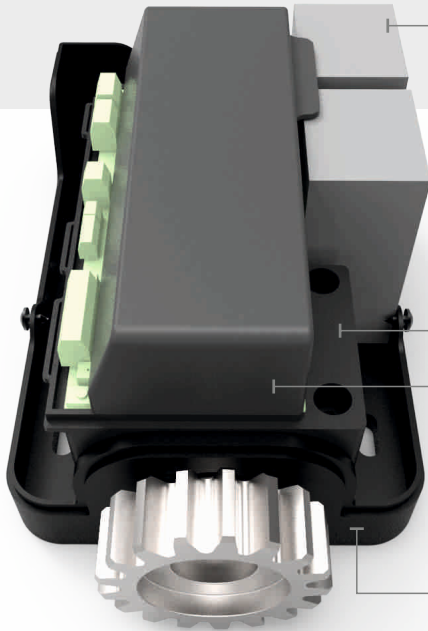
With ground-breaking technologies, Focus 600 is a brand new garden gate engine manufactured with unrelenting power and uncompromising quality in unique dimensions and features.



## SMART CONTROL

With an encoder system processed on state-of-the-art microprocessor control card, you are delivered the most precise control and features all in one.

With no limit switch, Focus 600 is designed to control all steps of the gate through artificial intelligence. Squeeze detection feature helps detect squeeze and jamming instantly, opens back the gate, slows down, sensing whether the object is still in there, if not, it accelerates and closes the gate.



### CONVENIENCE IN REAL

Optional accumulator feature enables that the gate functions to open and close up to 50 vehicles even in case of power cut.

### POWER SAVING

Promising uninterrupted operation through 24V engine, Focus 600 consumes 5 times less power compared to rival models.



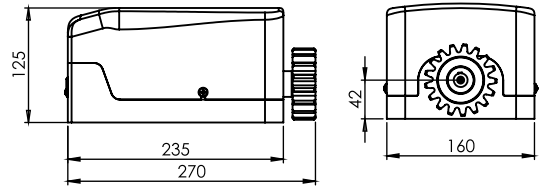
### SQUEEZE DETECTION

Squeeze detection feature enables that even a slightest object is detected and it opens back the gate.

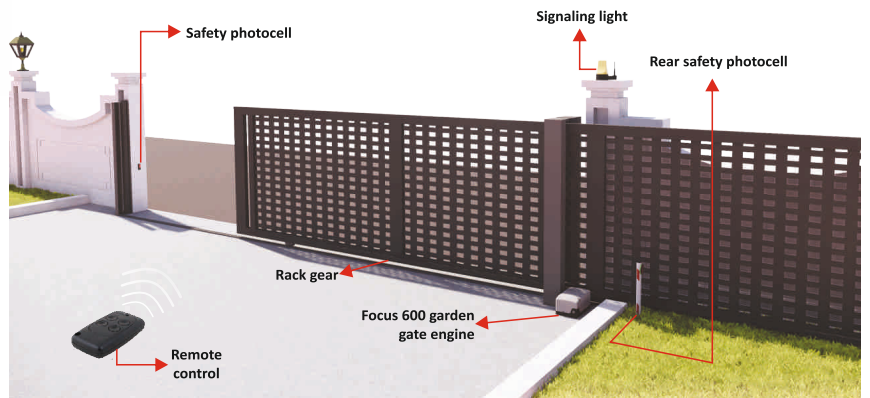
### SMART CLOSE

Focus 600 Smart Close feature enables that the gate closes slowly in a controlled manner and remains closed as soon as power is back on.

## TECHNICAL DIMENSIONS



Type	FOCUS 600
Maximum gateway	600 Kg
Protection class	IP54
Supply voltage	230 V 50/60 Hz
Operational voltage range	Min. 90V - Max. 280V
Engine voltage	24 V D.C.
Control unit	GTX 1024
Maximum power	50 W
Opening time	17m/min.
Operational sustainability	100%
Limit switch type	Encoder
Pinion module	4 (Z18)
Pinion rotating speed	52rpm
Slowing	Yes
Manual operation	With a private key
Operating temperature	-20°C min +70°C max
Engine range	3,6 Kg



**NOTICE:** Some information contained on this brochure may not be accurate due to possible modifications after printing. Please note that some of the hardware explained or otherwise demonstrated herein may be provided for an additional charge. You are strongly advised to contact a White Rose authorized dealer for the most recent details before placing an order. For the avoidance of doubt, the manufacturer reserves the right to change prices, colors, materials, features and models without prior notice from time to time.