

BIOCLASS

INDUSTRIAL



Areas of application

- Industrial Areas
- Closed High Bay
- Outdoor Workshops
- Closed Warehouses
- Closed Spor Complex
- Stores
- Restaurants and Cafes

Product benefits

- Efficient energy saving
- Elegant design
- Easy installation system

Product Specifications

- Lifetime (L70/B50) : up to 50,000 h
- Color temperature : 2,700 K - 6,500 K
- Operating Voltage : 220...240 V AC supply
- Type of protection : IP54
- Surface mounting
- Led Type : Samsung
- Driver : Philips - Meanwell - Eaglerice



IP 54



Product datasheet

Technical data

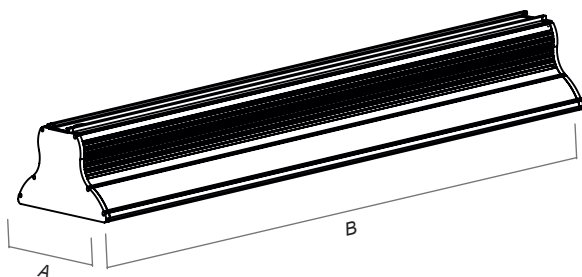
Electrical data

Nominal Wattage	116 W
Nominal Voltage	220 - 240 V
Power Factor	>0.9
Lumen / Watt	114 lm/watt
Total Harmonic Distortion	>%20
Mains frequency	50..60 Hz

Photometrical data

Color temperature	2700 K - 6500 K
Luminous flux	13255 lm
Color rendering index Ra	>80

Dimensions



Length	172.0 mm
Width	72.0 mm
Cut Size	N/A

Colors & materials

Body material	Aluminum Extrusion
Product color	Electrostatic Powder Paint

Note : Product body paint can be ordered with other RAL codes.

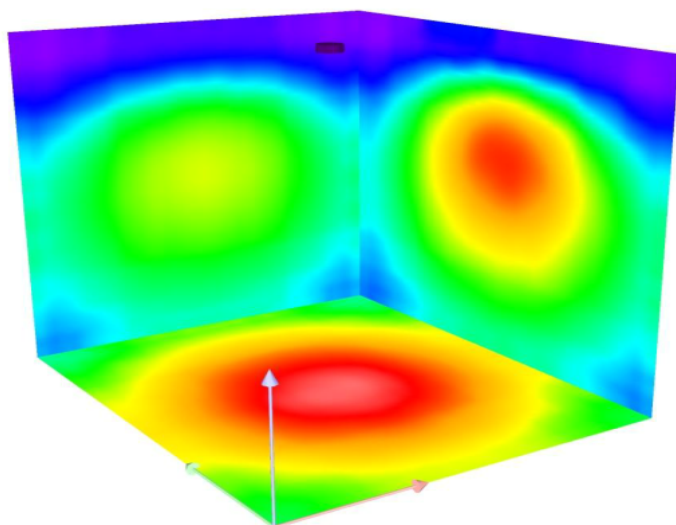
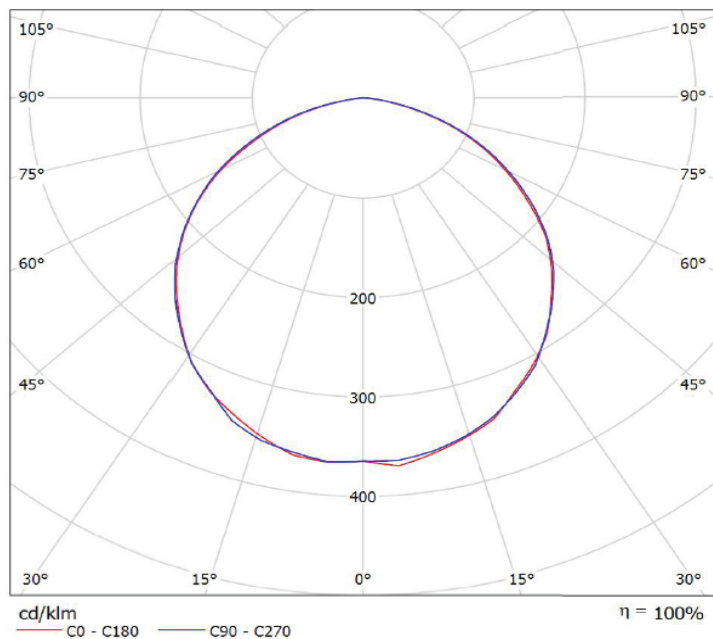
Temperatures & operating conditions

Ambient temperature range	-25 ... +85 °C
---------------------------	----------------

Product datasheet

Light Technical Data

Beam angle	wide distribution °
-------------------	---------------------



Type of cover	PC Diffuser
----------------------	-------------

Capabilities

Type of installation	surface
Type of connection	cable, 3 x 1.50mm ²

Certificates & standards

Protection class	insulation class I (safety insulation)
Type of protection	IP54