

TANK SERIES STAINLESS STEEL LED BOLLARDS



Bollards are designed specially as operation speed 4-6 second for avoiding traffic problems and available for manual usage when powercut.

It is also produced with optional 1 second emergency fast operation.

Moving part can rise from 50 cm to 100 cm as standardly.

Tank series bollards are designed and produced as fully compliant for all kind of access control systems.

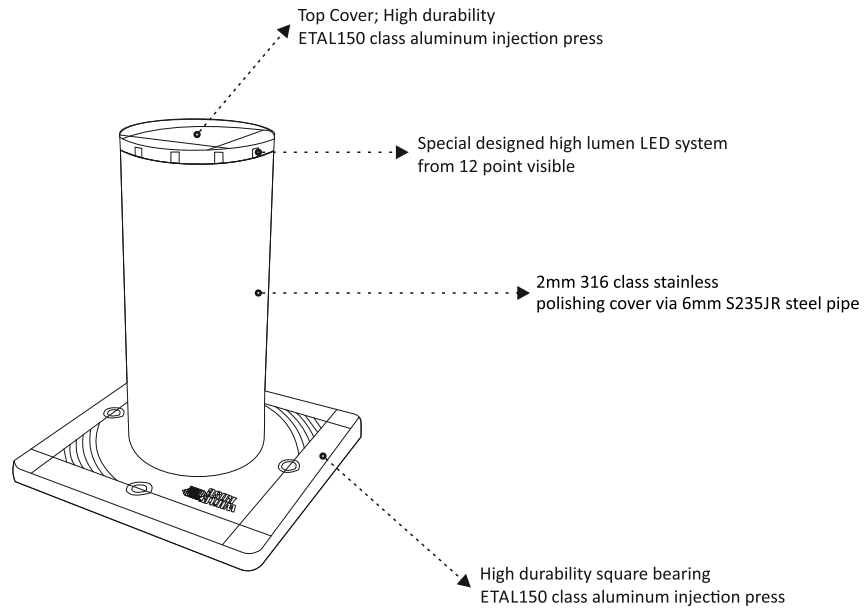
System main structure has built from S235JR quality steels, all hydraulic parts like unit, valves, locks are from BOSCH - Rexroth brand.

General Informations and Standards

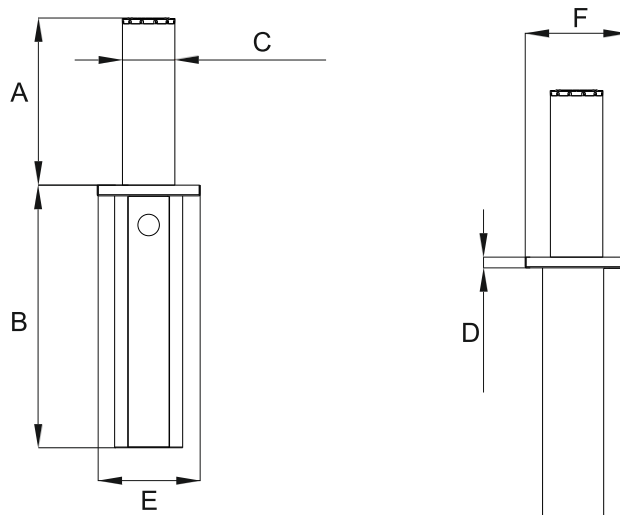
- ▶ T-MAG control panel
- ▶ Outer body is 316 quality stainless steel
- ▶ Operation speed is 4-6 second
- ▶ 3/8 R2 Hydraulic hoses 330 bar withstand
- ▶ 100% heavy duty cycle
- ▶ Fully compliant for access control systems
- ▶ Safety photocell and support
- ▶ Lift capacity is 750 kg each
- ▶ High performance working
- ▶ Fully safe and reliable operation
- ▶ Remote control and receiver system
- ▶ LED system on top for day/night visible
- ▶ 2 years warranty



Product Details



Dimensions



	A / mm	B / mm	C / mm	D / mm	E / mm	F / mm
50 Opener	500	900	220	45	430	430
60 Opener	600	1000				
70 Opener	700	1100				
80 Opener	800	1200				
90 Opener	900	1300				
100 Opener	1000	1400				



Technical Datasheet

Type	TANK PL SERIES					
Model	TPL-1	TPL-2	TPL-3	TPL-4	TPL-5	TPL-6
Rising Bollard Unit	Unary	Binary	Triad	Quad	Quinary	Senary
Movable Part	On 6mm S235JR Steel Pipe, 2mm 316 Quality Stainless					
Working System	Hydraulic					
Power Supply	380 V 3 Phases 50/60 Hz					
Control Card	T-MAG Control Card or (Optional PLC)					
Current	2,1 A	3,5 A	6,6 A		8,2 A	11,2 A
Motor Power	0,75 KW	1,5 KW	3 KW		4 KW	5,5 KW
Opening Time	4-6 sec					
Duty Cycle	100%					
Lift power for each Bollard	750 Kg					
Limit Switch Type	Adjustable engine working period					
Working Pressure Min.	20 Bar					
IP	54					
Working Pressure Max.	75 Bar					
Manual Opening	Global Valve					
Manual Closing	Optional Manual Pump					
Hydraulic Oil Type	32 or 46 number hydraulic oil					
Bollard Color	Satin Stainless Steel					
Warning Light	Led system designed specially in upper hood					
Hydraulic Hose	3/8 R2 330 Bar					
Working Temperature	-20°C min +70°C max					
Bollard Barrier Weight	110 Kg	110 Kg x 2	110 Kg x 3	110 Kg x 4	110 Kg x 5	110 Kg x 6

Optional Extras

- Oil Heater
- Automatic Water Drainage Pump
- Manual Hand Pump
- Oil Cooler
- Traffic Lights (red-green)
- Checkered non-sliding plate
- Emergency Fast Operation (1sec)
- Traffic Lights post
- Loop Detector Double Contact
- PLC Control Panel
- PLC Control Screen
- Hot-Dip Galvanization

ADRES

Organize Sanayi Bölgesi
9. Cad. No. 1 KARAMAN, TR

T: 0 338 224 13 60

F: 0 338 224 14 46

M: whiterose@whiterose.com.tr

W: www.whiterose.com.tr